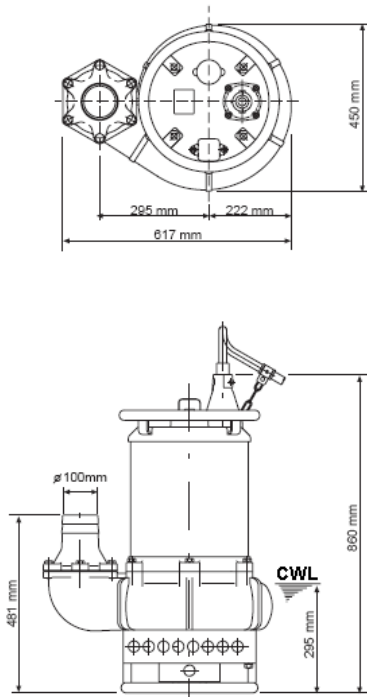
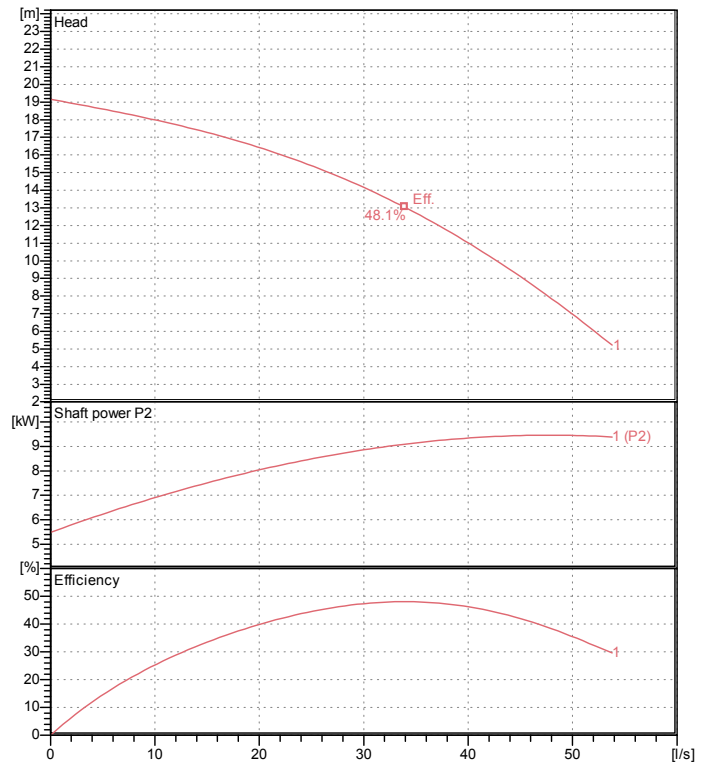


Data sheet GPN3-100



CWL: Continuous running water level



Specification

Electric submersible pump
 Degree of protection IP 68
 Depth of submersion max. 40 m
 Type of impeller Open
 Max. solid handling 30 mm
 Suitable for:
 sludge, slurry, liquids containing sand

Electric motor

Dry-type submersible induction motor
 Insulation class B 4Poles 1450 1/min
 Starting mode Directly
 Rated voltage 400 V 50 Hz 3~
 Power uptake 13.21 kW
 Rated power 11.00 kW
 Rated current 22 A
 Start current 163.0 A

Cable

20m H07RN-F 4Cx4mm²

Motor Protection

Circle thermal protector
 (snap-action bi-metal device)

Shaft seal

Double inside mechanical seal in oil bath
 additional lubrication by oil lifting device
 Primary seal
 Silicon carbide on silicon carbide
 Secondary seal
 Stainless steel SUS420J2

Bearings

Shielded ball bearings, maintenance-free

Materials

| | |
|-------------|----------------------------------|
| Impeller | Chromium iron casting |
| Pump casing | FC200 (EN-GJL-200) |
| Motor Frame | FC150 (EN-GJL-150) |
| Shaft | SUS 1.7220 (chromium molybdenum) |

Discharge size

4" (100mm) hose coupling

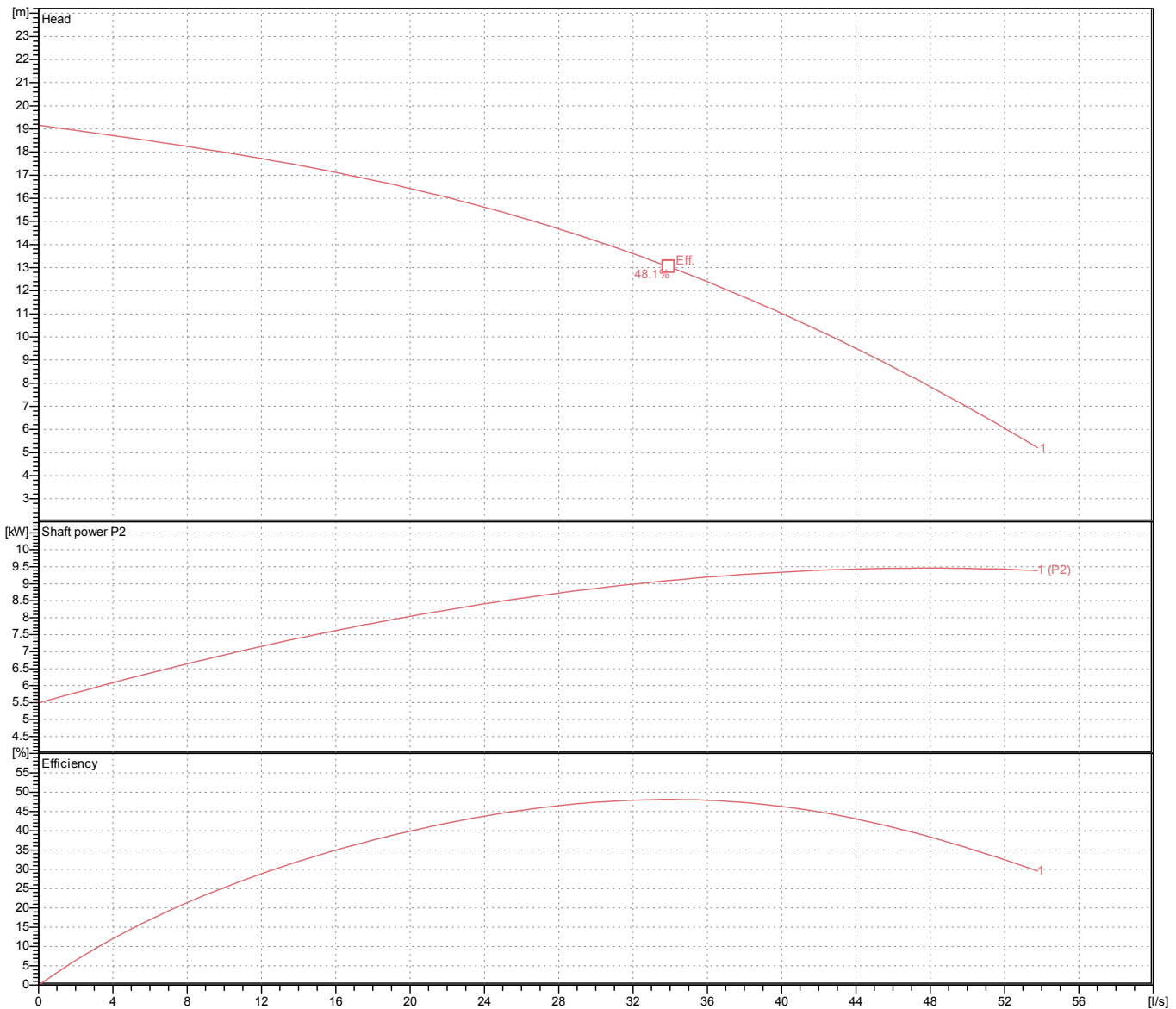
Weight

217 kg (dry weight of the pump only without cable)

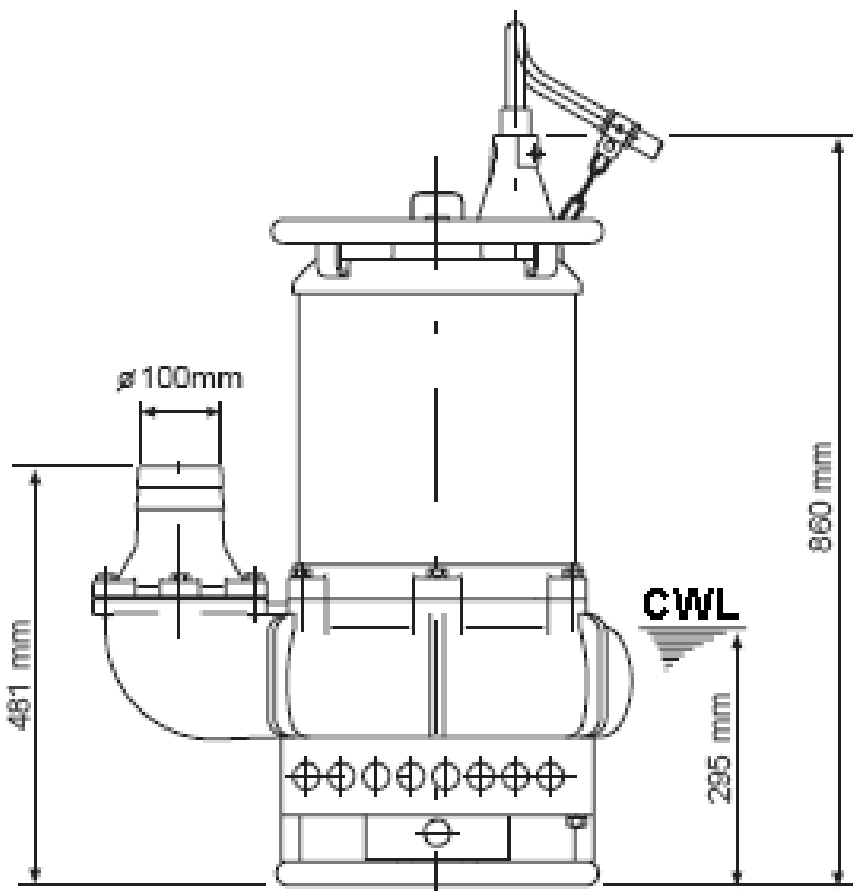
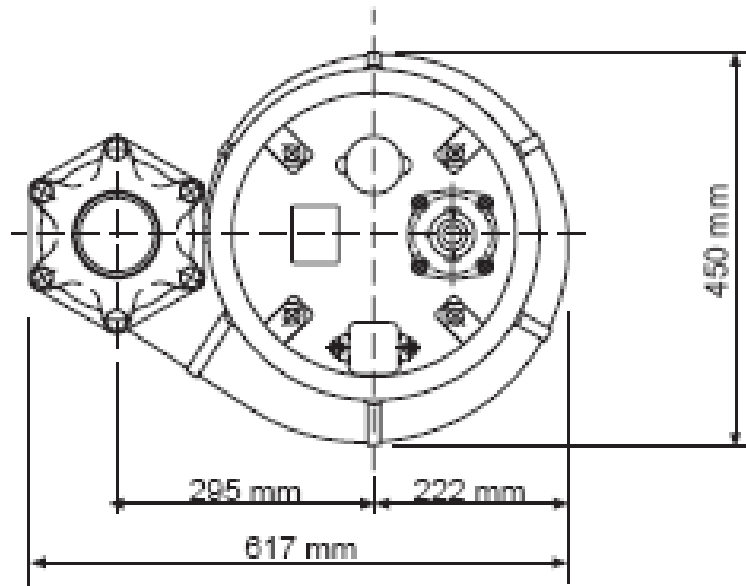
Performance curve

GPN3-100

| | |
|------------------|------------|
| Discharge port | 4" |
| Head | 19.2 m |
| Flow | 53.8 l/s |
| Rated power | 11.00 kW |
| Power input | 13.21 kW |
| Phases | 3~ |
| Voltages | 400 V |
| Frequency | 50 Hz |
| Rated current | 22 A |
| Starting current | 163.02 A |
| Number of poles | 4 |
| Speed | 1450 1/min |
| Starting mode | Directly |
| Insulation class | B |

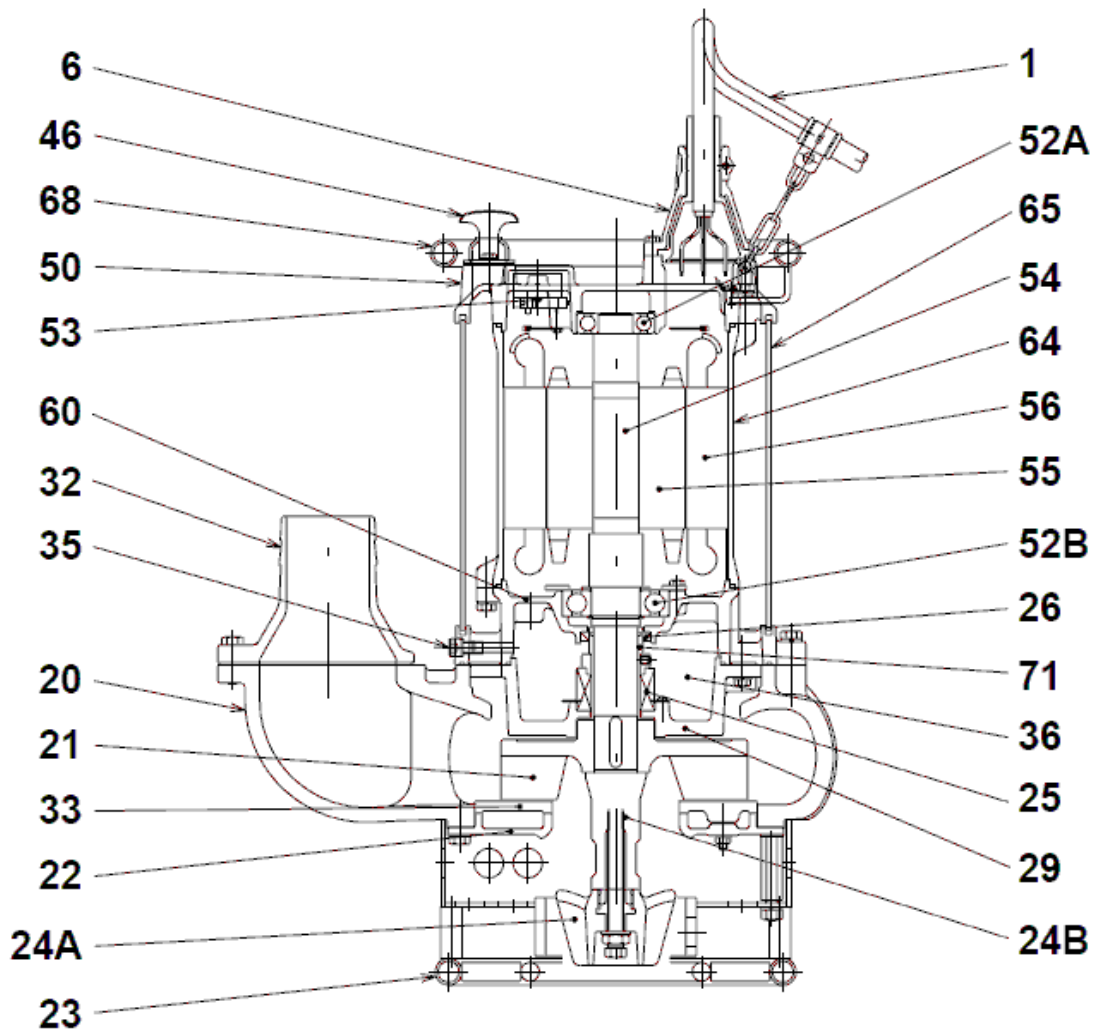


Dimensions GPN3-100



CWL: Continuous running water level
LWL: Lowest running water level

Sectional drawing GPN3-100



GPN3-100

| No. | Denomination | Remark | No. | Denomination | Remark |
|-----|-----------------|---------------------------------|-----|-------------------------|----------------------------------|
| 1 | Cable | 20m H07RN-F 4Cx4mm ² | 52A | Upper bearing | 6307ZZC3 |
| 6 | Stuffing box | FC200 (EN-GJL-200) | 52B | Lower bearing | 6310ZZC3 |
| 20 | Pump casing | FC200 (EN-GJL-200) | 53 | Motor Protector | . |
| 21 | Impeller | Chromium iron casting | 54 | Shaft | SUS 1.7220 (chromium molybdenum) |
| 22 | Suction cover | FC200 (EN-GJL-200) | 55 | Rotor | . |
| 23 | Strainer | Steel plate / steel pipe | 56 | Stator | . |
| 24 | Agitator | Chromium iron casting | 60 | Bearing Housing | FC150 (EN-GJL-150) |
| 25 | Mechanical seal | NH-50 | 64 | Motor Frame | FC150 (EN-GJL-150) |
| 26 | Oil seal | TC-55729 | 65 | Outer Cover | Construction steel SS400 |
| 29 | Oil casing | FC200 (EN-GJL-200) | 68 | Handle | electroplated steel pipe |
| 32 | Pressure socket | FC200 (EN-GJL-200) | 71 | Shaft protection sleeve | Stainless steel SUS304 |
| 33 | Suction cover | Chromium iron casting | | | |
| 35 | Oil screw | Stainless steel SUS304 | | | |
| 36 | Lubricant | Turbine oil (ISO VG32) | | | |
| 46 | Air vent valve | Steel plate | | | |
| 50 | Motor cover | FC150 (EN-GJL-150) | | | |